



Immersion Education System

towards 2032 and beyond



Foreword

Cemlyn Rees Williams

Cabinet Member for Education



"My vision is to have a Welsh-medium and bilingual education system that puts the needs of all our learners at the heart of our provision.

I would like to see a flexible immersion education system, which provides first class education and training, supporting new learners to successfully acquire the Welsh Language, as well as ensuring high quality provision, experiences and support through the medium of Welsh that responds to the needs of the learners and their families, and will enable them to develop as independent and confident bilingual learners and to succeed and thrive."

CYMRAEG 2050

"Welsh medium immersion education is our main method of ensuring that children are able to develop their Welsh language skills, and of creating new Welsh-speakers."

Welsh Government's aim is... to create a statutory education system which increases the number of confident Welsh-speakers.

Welsh Government: Cymraeg 2050



Llywodraeth Cymru
Welsh Government

The purpose of the **immersion education system** towards 2032 and beyond is to:

- Promote the achievement and welfare of Gwynedd newcomers to acquire the Welsh language.
- **Support learners who need an additional boost to increase their Welsh language confidence/skills at school.**
- Empower and support Gwynedd's schools workforce to implement immersion education principles in the Foundation Phase.
- **Provide guidance, support and resources to the Gwynedd schools workforce to enable them to support learners to make further progress in terms of their Welsh language confidence/skills.**
- Assist parents and carers to understand the value of Welsh-medium education and assist them to support their children.





The vision for learners who are new learners of the Welsh language is:

Access to an excellent immersion education system that provides flexible and sustainable learning experiences of a high standard that equips them as independent learners who have the information and Welsh language skills to enable them to move forward.

To provide an effective transition from immersion education to the local school, ensuring a high standard of experiences and support through the medium of Welsh, that responds to the needs of learners and their families to enable them to succeed and thrive.

The Vision

Our vision is to have an immersion education system that places the needs of learners at the centre of our provision.

We would like to see a flexible system, which provides first class immersion education for the learners, nurturing their Welsh language skills to enable them to succeed and thrive in our schools, becoming confident bilingual speakers.



Our Aim





5

Aims

These are the aims which will provide the foundation for the immersion education system towards 2032 and beyond:

1. TEACHING AND LEARNING

1. An innovative immersion education system, based on expertise and enriching the teaching and learning experience as well as encouraging excellence in the field.
2. The outcomes for all learners lay a solid foundation in Welsh, developing a lifelong interest in the languages of Wales and languages of the World, thus making them ambitious, capable learners, ready to learn in Gwynedd's bilingual education system and throughout their lives.
3. A modern immersion education system that celebrates identity, language awareness and heritage, developing learners who are principled, knowledgeable citizens ready to be citizens of Wales and the world.

2. LEARNING ENVIRONMENT

1. A state-of-the-art learning environment, with modern facilities for 21st century learners and educators.
2. An inclusive learning environment that responds to diverse needs including vulnerable learners and learners with Additional Learning Needs.
3. A learning environment that takes advantage of the latest technology and provides learners with a variety of experiences and skills in language acquisition.

3. CURRICULUM:

1. A robust and durable immersion education system that can adapt to any relevant changes in education.
2. A fit for purpose contemporary immersion education provision for 2032 and beyond that reflects the requirements of the learners and the curriculum.
3. An immersion education system that works in partnership with schools to support and deliver the curriculum.



Achieving the Aim, Vision and Objectives

We will invest £1.1m of Welsh Government Welsh-medium education capital grant into our immersion education system in Gwynedd to ensure a state-of-the-art learning environment, with modern facilities for 21st century learners and educators.

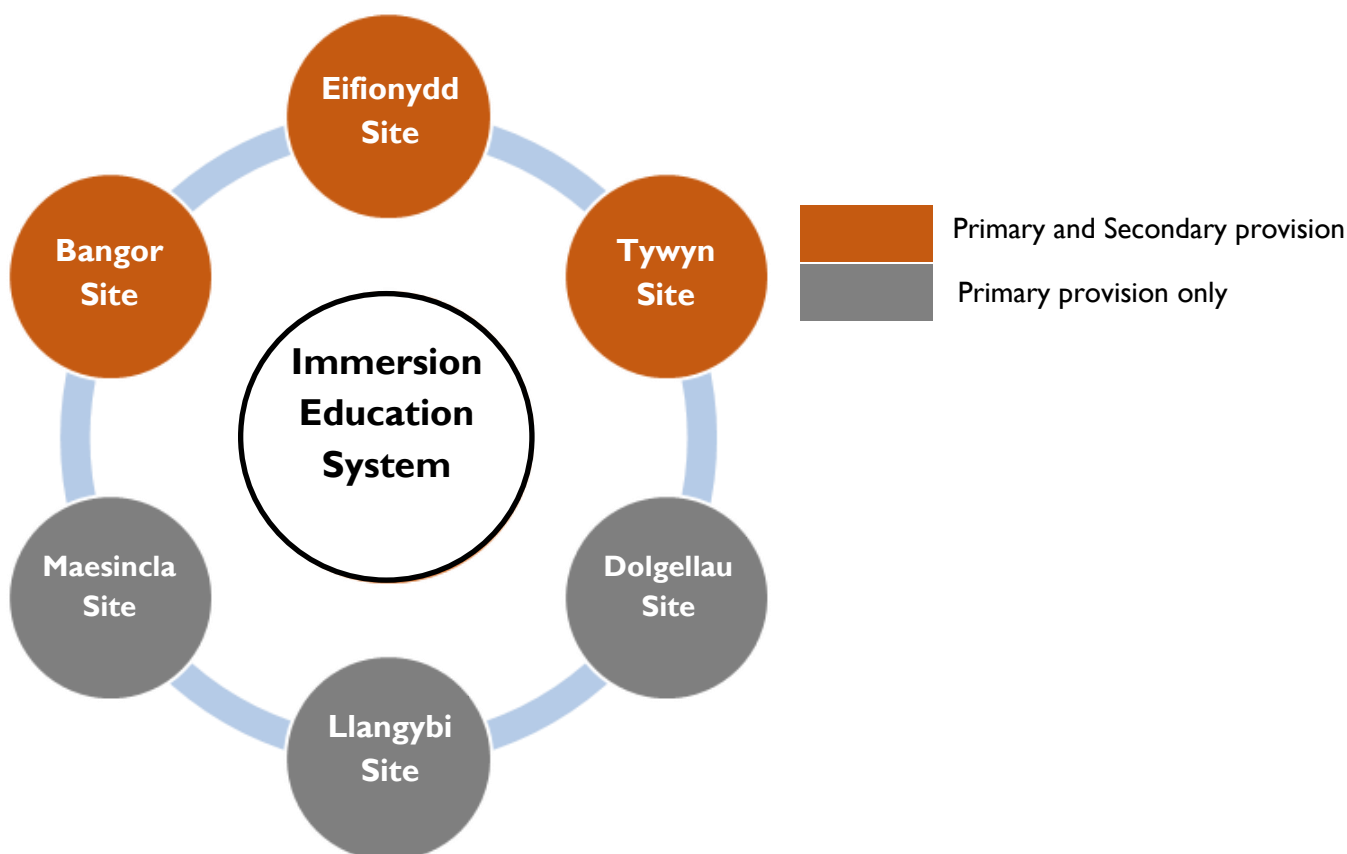
This capital investment will facilitate the establishment of two completely new immersion education sites in Gwynedd, located in strategic areas of the county and areas of linguistic significance, namely Tywyn and Bangor. It is also intended to improve the facilities in the Eifonydd immersion education site which again is strategically located in the centre of the county. These three immersion education sites will offer primary and secondary provision jointly, bridging years 5-9.

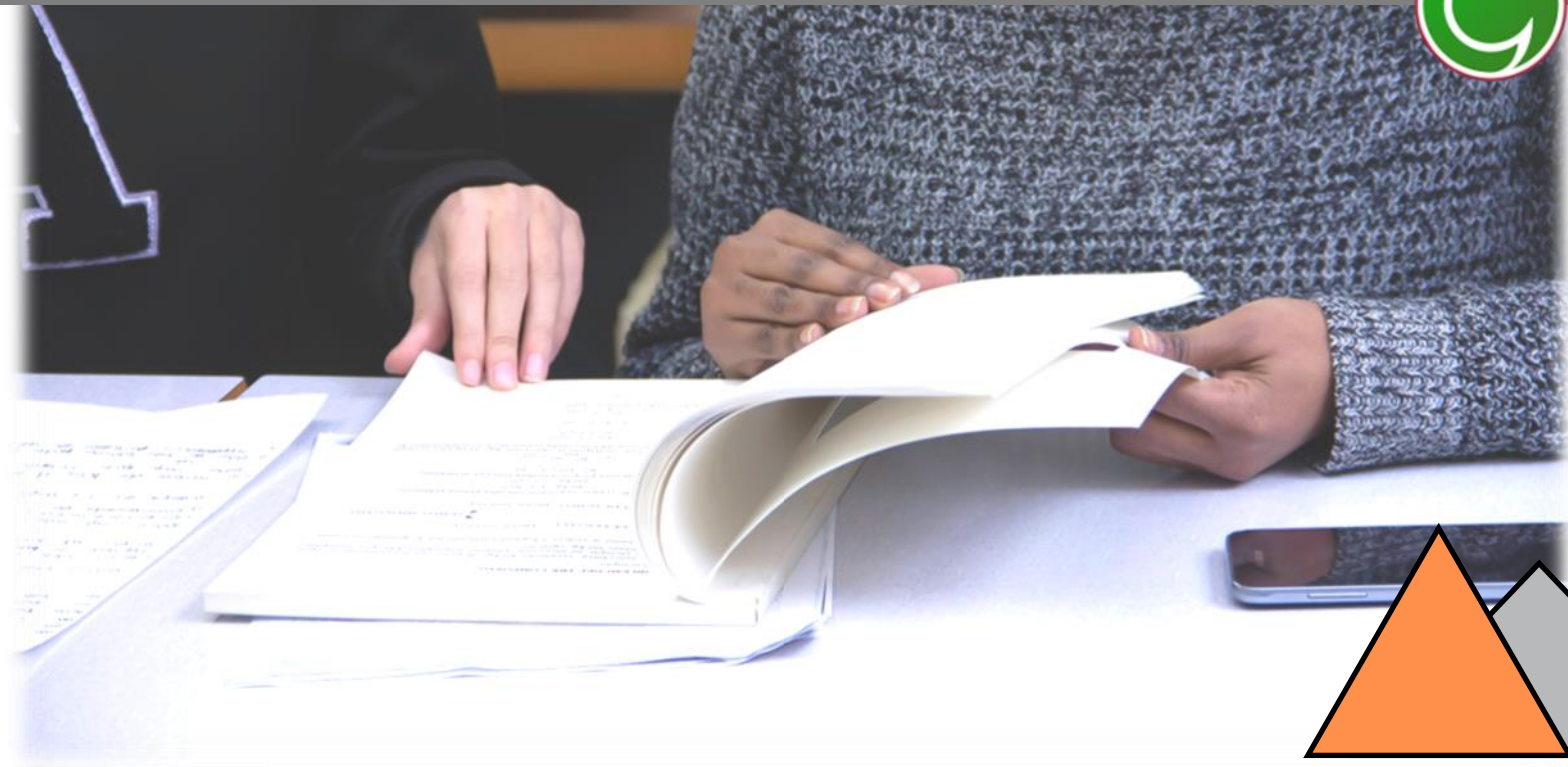
It is also intended to relocate the Dolgellau Language Centre to a larger site in order to offer the provision to more children, and the Dolgellau site, together with Llangybi and Maesincla, will provide immersion education to years 2-4 of primary schools.

As a result of the capital investment, six sites will offer provision to primary age learners and three sites will offer provision for secondary learners, with flexibility between the sites as needed.

Consequently, in the new system, it will be possible to offer the provision to more learners.

As a result of the above, the new immersion education system in Gwynedd will have six sites, as follows:





Catchments served

The following table notes which catchment areas the Gwynedd Immersion Education System sites will serve generally.

There will be flexibility between all the sites in terms of accepting learners from different catchment areas depending on numbers, particularly those catchment areas which border several sites e.g. Ardudwy and Dyffryn Nantlle.

Catchments areas	Bangor BI 5-9	Eifionydd BI 5-9	Tywyn BI 5-9	Maesincla BI 2-4	Llangybi BI 2-4	Dolgellau BI 2-4
Dyffryn Ogwen	Orange			Grey		
Bangor	Orange			Grey		
Brynrefail	Orange			Grey		
Syr Hugh Owen	Orange			Grey		
Dyffryn Nantlle	Orange			Grey	Grey	
Botwnnog		Orange			Grey	
Glan y Môr		Orange			Grey	
Eifionydd		Orange				
Y Moelwyn		Orange				Grey
Ardudwy		Orange	Orange			Grey
Bro Idris			Orange			Grey
Y Berwyn			Orange			Grey
Tywyn			Orange			Grey

The Provision

The primary and secondary immersion education provision will be a 4 day-a-week provision, for a period of 8-10 weeks. This will be a means of ensuring that the immersion provision can be maintained in full for the three school terms.

Learners will attend their local school for one day every week, which will be a way for the learners to continue contact with their local schools, ensuring continuation of their immersion education in Welsh there, as well as having full access to the curriculum.

For one day a week, when the learners attend their local school, the staff of the immersion education system will be available to support the learners in the schools, assist in the other immersion education sites, provide support for the learners from a distance, give guidance to the schools to support the learners, as well as create and provide resources in response to the need of the Welsh-medium education field and immersion education more generally.

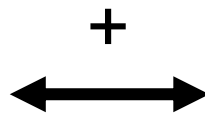
For the remaining period in every term where the learners will return to their local schools, the immersion education system staff will implement a full programme of blended learning, namely face-to-face teaching at school, live learning sessions via Teams, as well as distance learning via Google Classrooms to ensure additional support for the learners to assist them to make further progress to acquire the Welsh language at school.

It will be possible to provide blended learning at any time to learners who still need additional support as they return to their local school after spending 8-10 weeks in the immersion education provision.

Modelling the provision



Learners attend the nearby Immersion Education provision for 4 days a week for a period of 8-10 weeks.

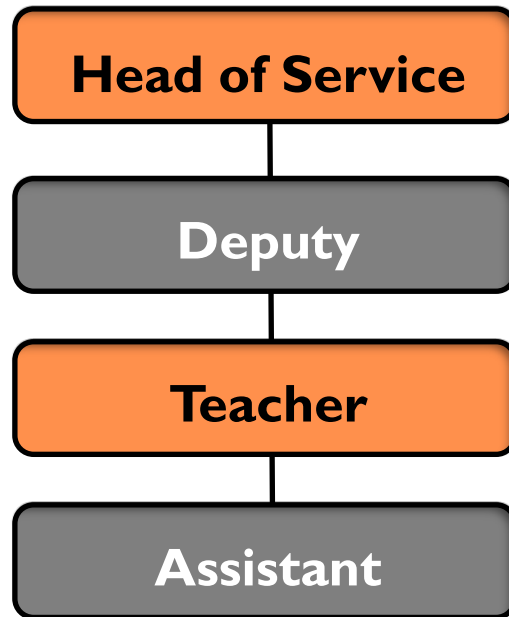


Learners attend their local school for 1 day a week for a period of 8-10 weeks before returning to their local school full time.





Staffing Structure



Funding

The Immersion Education System towards 2032 and beyond will be funded from three different sources, namely:

- **EIG Grant**
This is the core grant to fund the Immersion Education System, however, as a result of inflation and an increase in costs, this grant alone is not sufficient to fund the provision in full.
- **Schools**
The immersion education system is a specialist service and pivotal to the implementation of the Gwynedd education language policy.
Consequently, it is intended to ask for a financial contribution from the schools which will be a means of ensuring a fit-for-purpose immersion education system towards 2032 and beyond.
- **Education Department**
The Education Department is already contributing towards the costs of the provision, and this contribution will continue, by:
 - provide match funding to the EIG grant
 - Contribute towards the transport costs for the immersion provision.



Measure of Success:

We will measure the immersion education system's success specifically by means of the following measure: **Number / % of new learners reaching Level 2 (speech) at the end of their intense immersion period.**

We will also measure the success of the immersion education system from the contribution of the system to the following outcomes in the Authority's Welsh in Education Strategic Plan:

- More reception class / 5 year old children educated through the medium of Welsh. (WESP: Outcome 2)
- More pupils continuing to improve their Welsh language skills when transferring from one stage of their statutory education to another. (WESP: Outcome 3)
- More learners studying for Welsh (as a subject) qualifications and subjects through the medium of Welsh. (WESP: Outcome 4)
- More opportunities for learners to use the Welsh language in different contexts in the school. (WESP: Outcome 5)
- Increase in the Welsh-medium education provision for pupils with additional learning needs (ALN) (WESP: Outcome 6)



Welsh in Education Strategic Plan (WESP):

The Welsh in Education Strategic Plan (WESP) is a statutory document under section 84 of the Schools Standards and Organisation (Wales) Act 2013 and the content complies with the Welsh in Education Strategic Plans (Wales) Regulations 2019.

These WESP outlines the way in which Local Authorities intend to achieve the Welsh Government aims and targets in the context of Welsh-medium education.

In Gwynedd, the WESP is interpreted in the context of the County's Education Language Policy. The aim of the Language Policy is to ensure that all of the County's pupils have well-balanced, age-related bilingual skills to enable them to be full members of the bilingual society of which they are part. Age-relevant bilingualism means that pupils have the appropriate language skills in both Welsh and English.

The purpose of the Immersion Education System is to promote the achievement of new learners to acquire the Welsh language through intense immersion provision, together with providing support for learners who need an additional boost to increase their Welsh language confidence or skills at school. This Immersion Education System provision is central to assisting primary and secondary schools to implement the current Language Policy, and also contributes to the success of our learners in the Welsh-medium and bilingual education system found in Gwynedd.



*"I am pleased to publish the **Gwynedd Welsh in Education Strategic Plan for 2022-2032.***

The Plan reflects my vision of having a Welsh-medium and bilingual education system that puts the needs of all our learners at the heart of our provision.

The Plan sets a clear commitment and direction for ensuring that learners in Gwynedd attain the highest standards in order to maintain the language, culture and economy locally.

*The Council's Departments, schools and wider partners are committed to accomplishing all the aims and objectives of the **Welsh in Education Strategic Plan** and consequently to supporting Welsh Government's strategy to reach the goal of a million Welsh-speakers by 2050, ensuring that there are opportunities at every stage of an individual's life to learn Welsh and to learn through the medium of Welsh.*

It is a very exciting time for the Welsh language, and I would like to ensure high quality provision, experiences and support through the medium of Welsh that responds to the needs of the learners and their families, and will enable them to develop as independent and confident bilingual learners and to succeed and thrive.

Similarly, I would like to ensure that the entire workforce of our schools are confident bilingual speakers, who receive support to nurture their confidence and skills in the Welsh language, and able to transfer those skills effectively to teach and learn through the medium of Welsh and bilingually in the classroom."

Councillor Cemlyn Rees Williams,

Cabinet Member for Education.



